

We are DEVELON

We trace our roots to 1937 as one of Korea's first large scale machine plant. Throughout time we have consistently delivered exceptional products and solutions.

DEVELON is a bold name that reflects our core ambition to continue developing onwards and leaving behind a positive footprint in our world. Moving forward, we seek to be part of our customers and partners' endeavor to build a better world.

Powered by **Innovation**



©2024 HD Hyundai Infracore. All rights reserved.
HDIPBE-01-2402

Certain specification(s) are based on engineering calculations and are not actual measurements. Specification(s) are provided for comparison purposes only and are subject to change without notice. Specification(s) for your individual Develon equipment will vary based on normal variations in design, manufacturing, operating conditions, and other factors. Pictures of Develon units may show other than standard equipment.

develon-ce.com

DEVELON

Log Loader

DX225LL



DX225LL

BUILT FOR EXTREME WORKING CONDITIONS

DX225LL was developed specifically to make every phase of forestry work more productive. Reliable hydraulics, high horsepower and superior torque characteristics help you move more timber per day.

DX225LL handles timber with performance, durability, and precision. Each model delivers effective, efficient forestry work all day long. Even in extreme conditions, DEVELON provides unbeatable productivity and a cost-to-performance ratio that any owner can appreciate. For maximum productivity, pair your log loader with a 360-degree rotating log grapple.

FOCUSED ON IMPROVING OPERATOR PRODUCTIVITY

When you're comfortable, you're more productive. DX225LL delivers the comfort, control and visibility required for you to remain focused and do your best work – even on the most challenging days.



TECHNICAL SPECIFICATIONS

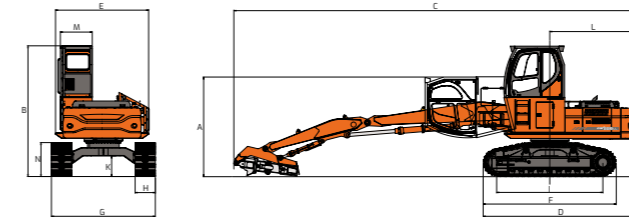
ENGINE

| | |
|---------------------|--|
| Model | DEVELON DL06 |
| Number of cylinders | 6 |
| Rated Horse Power | 110 kW (150 PS) at 1,900 rpm (DIN 6271) 110 kW(148HP) at 1,900 rpm (SAE J1349, net) |
| Max. torque | 68 kgf.m(667 Nm) at 1,400 rpm |
| Piston displacement | 5,890 cc |
| Bore & stroke | 100 mm x 125 mm |
| Starter | 24 V / 4.5 kW |
| Batteries | 2 x 12 V / 100 Ah |
| Air cleaner | Double element and pre-filtered turbo with auto dust evacuation. |

DRIVE

| | |
|-------------------------|-----------------|
| Travel speed (high/low) | 4.6/2.8km/h |
| Maximum traction force | 24.5 / 12.4 ton |
| Maximum grade | 35° / 70% |

DIMENSIONS



| | |
|---|-------------------|
| A Overall Transport Height W/Attachment | 3,453 mm (11'4") |
| B Overall Height | 4,530 mm (14'10") |
| C Overall Length | 13,947 mm (45'8") |
| D Overall Length (Without Attachment) | 5,308 mm (17'5") |
| E Width of Upper Structure | 3,226 mm (10'7") |
| F Track Overall Length | 4,613 mm (15'2") |
| G Track Overall Width | 3,600 mm (11'10") |
| H Track Shoe Width | 3,680 mm (12'1") |
| I Tumbler Distance | 4,530 mm (14'10") |
| J Upper Structure Ground Clearance | 1,299 mm (4'3") |
| K Minimum Ground Clearance | 711 mm (24") |
| L Tail Swing Radius | 3,000 mm (9'10") |
| M Cabin Guard Width | 1,105 mm (3'8") |
| N Track Height | 1,176 mm (3'10") |

HYDRAULIC SYSTEM

| | |
|---------------------------------------|---|
| Main pumps | 2 variable displacement axial piston pumps Max flow: 2 x 220 l/min |
| Pilot pump | Gear pump - max flow: 26 l/min |
| Maximum system pressure (work/travel) | 330(350) / 330 kg/cm ² |

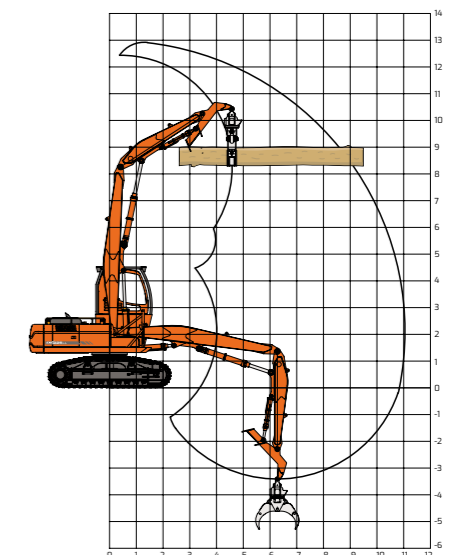
HYDRAULIC CYLINDERS

| Cylinders | Quantity | Bore x Rod diameter x Stroke |
|-----------|----------|------------------------------|
| Boom | 2 | 140 X 95 X 1,143mm |
| Arm | 1 | 165 X 115 X 1,454mm |
| Heel | 1 | 115 X 75 X 915mm |

UNDERCARRIAGE

| | |
|--|--|
| Number of rollers and track shoes per side | Upper rollers: 2 (standard shoes) Lower rollers: 9 Shoes: 48 Total length of track: 4,613mm |
|--|--|

WORKING RANGES



| | |
|---------------------|-------------------|
| Max. Loading reach | 11,035 mm (36'2") |
| Max. Loading depth | 3,410 mm (11'2") |
| Max. Loading height | 12,920 mm (42'5") |
| Rear swing radius | 3,000mm (9'10") |
| Min. swing radius | 4,155 mm (13'8") |